

GEORGIA
GEORGIA
GEORGIA
GEORGIA
GEORGIA

Department of Corrections



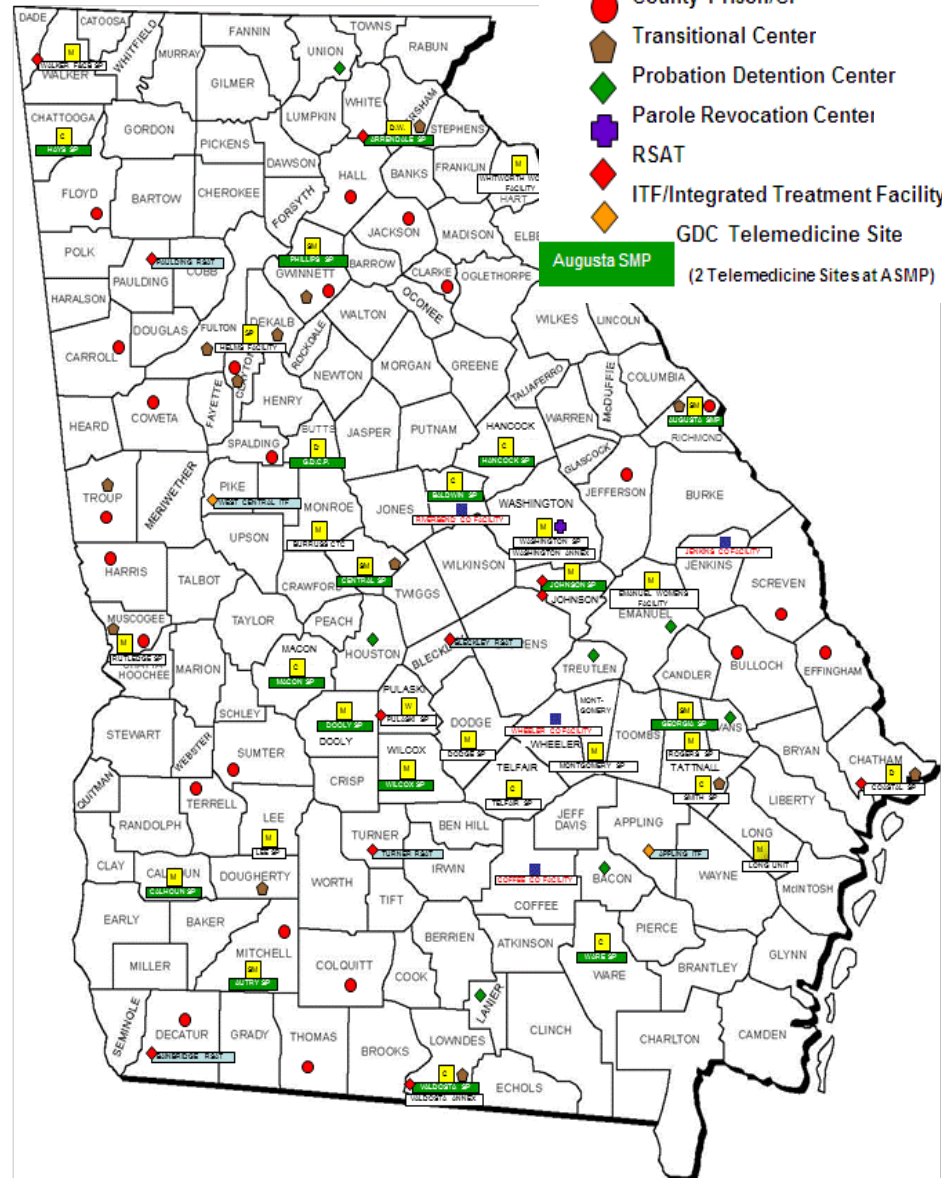
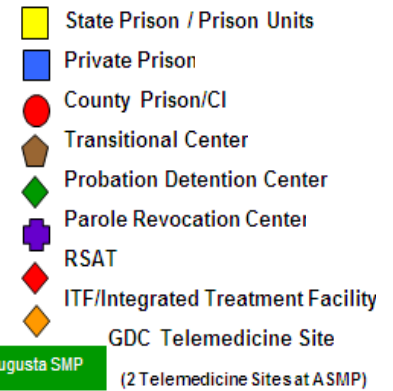
Georgia Department of Corrections

October 28, 2015

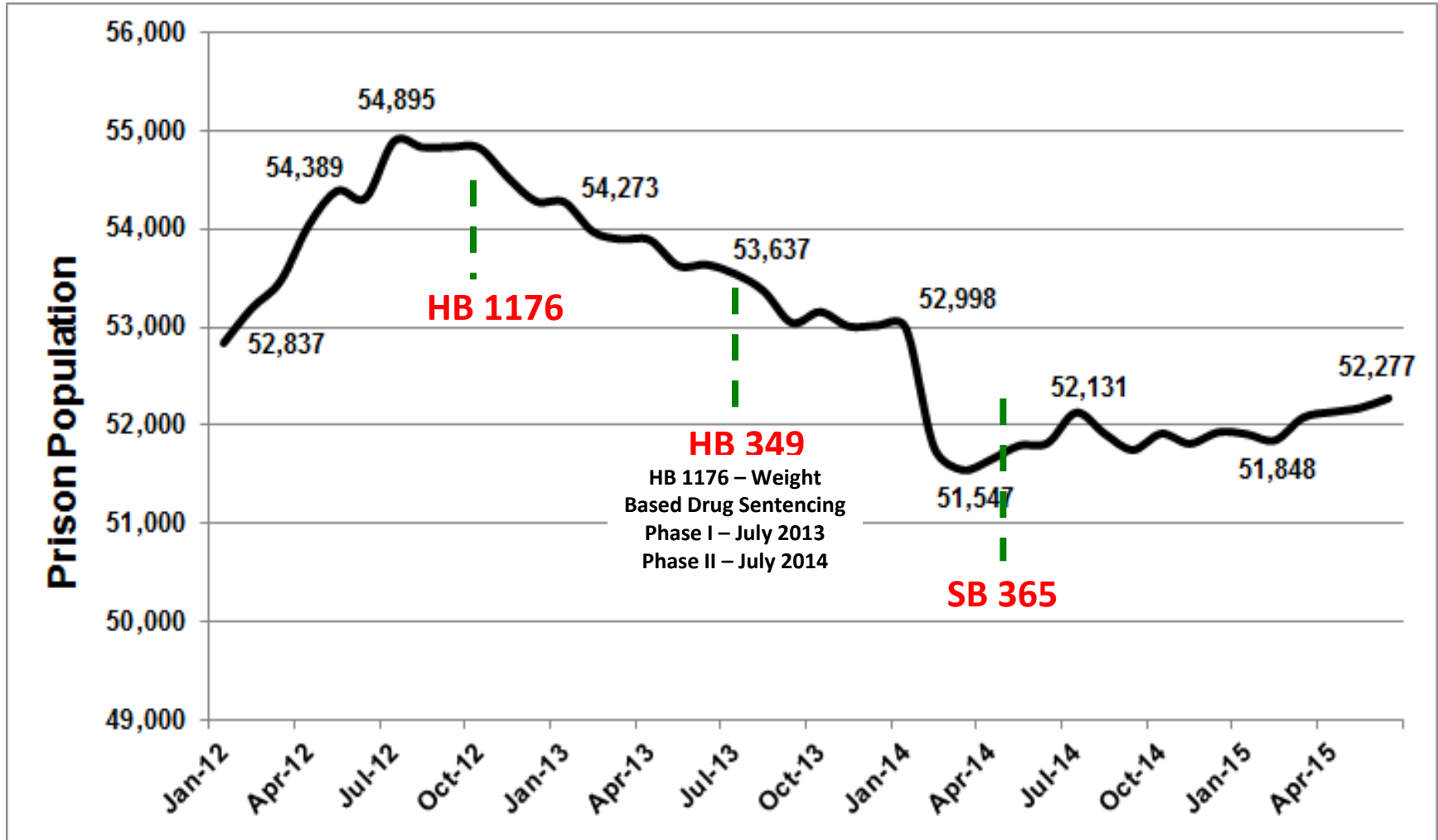
GDC Facilities Roll-Up

“Where They All Are”

- ◆ **33 State Prisons / Prison Units (34,583 beds)**
 - 28 male, 5 female
- ◆ **4 Private Prisons (7,918 beds)**
 - Medium and lower security males
- ◆ **23 County Prisons/CIs (5,096 beds)**
- ◆ **13 Transition Centers (2,667 beds)**
 - 11 male, 2 female (LATC & Metro TC)
- ◆ **7 Probation Detention Centers (1,851 beds)**
 - Length of stay between 60-120 days
- ◆ **8 Residential Substance Abuse Treatment Centers (RSAT) & 2 Integrated Treatment Facilities (ITF) (1,800 beds combined)**
 - Length of stay between 6 – 9 months
- ◆ **1 Parole Revocation Center (200 beds)**

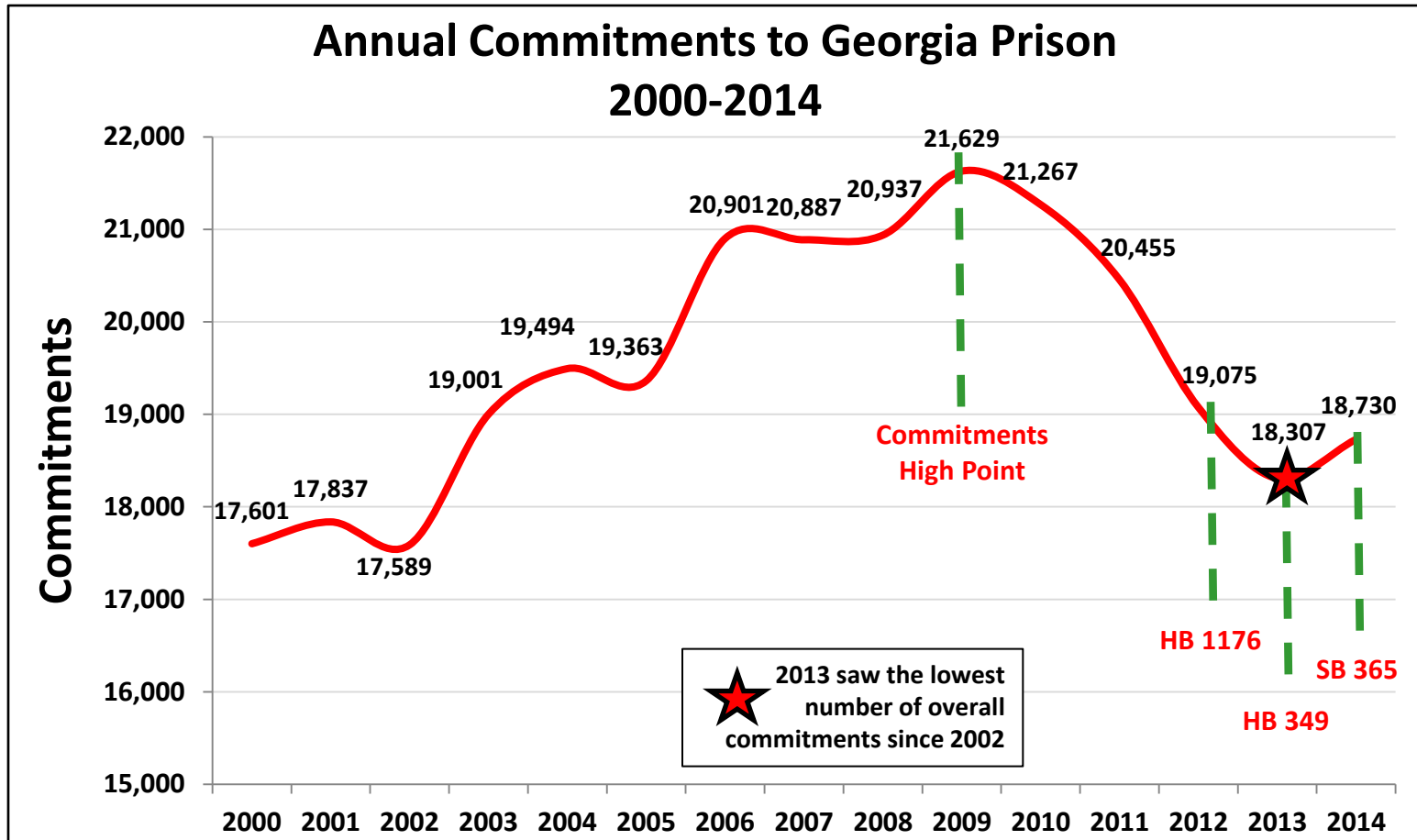


Criminal Justice Reform Initiatives vs. Prison Population



* Population figures based on inmate sundown counts in SCRIBE using end of month numbers

Georgia Prison Commitments



- Statewide annual commitments to prison have decreased from 21,638 in 2009 to 18,424 in 2013, a nearly 15% drop
 - Commitments for drug offenses decreased 23.1%
 - Commitments for property offenses decreased 21.6%
- 36 out of 49 Judicial Circuits declined in prison commitments from 2009 - 2013

Influences on Commitment Rates

❑ Accountability Courts (2008-2013 data)

- Correlation can be made that the 14 circuits with **both drug and mental health courts declined** in prison commitments by **27%** over the last 5 years
- 10 circuits with **only drug courts** had a **23% reduction** in commitments
- 11 circuits that had **no accountability courts** showed a **15% decline** in commitments but the overall number of commitments was very low

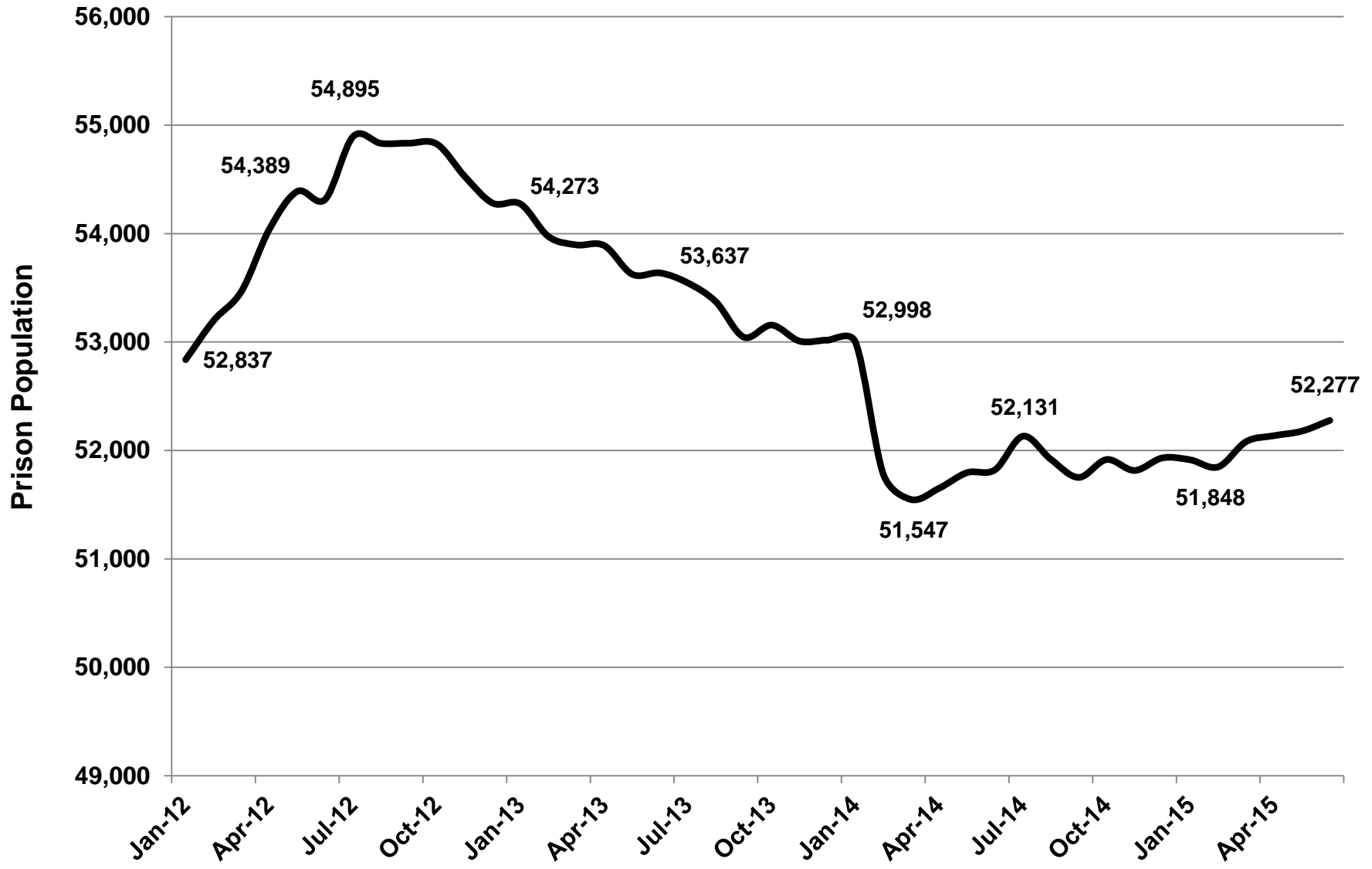
❑ CJ Reform Measures

- Sentence Threshold Changes - 2012
 - Burglary, Theft, Forgery, Drug Possession
- Electronic Records Submission - 2012
 - 54,000+ submitted since July 2012
- Probation Detention Center (180 day cap) = Open beds & timely entry
 - PDC backlog was down to 0 by Jun 2013 (750 in Jan 2012, 250 in Dec 2012)

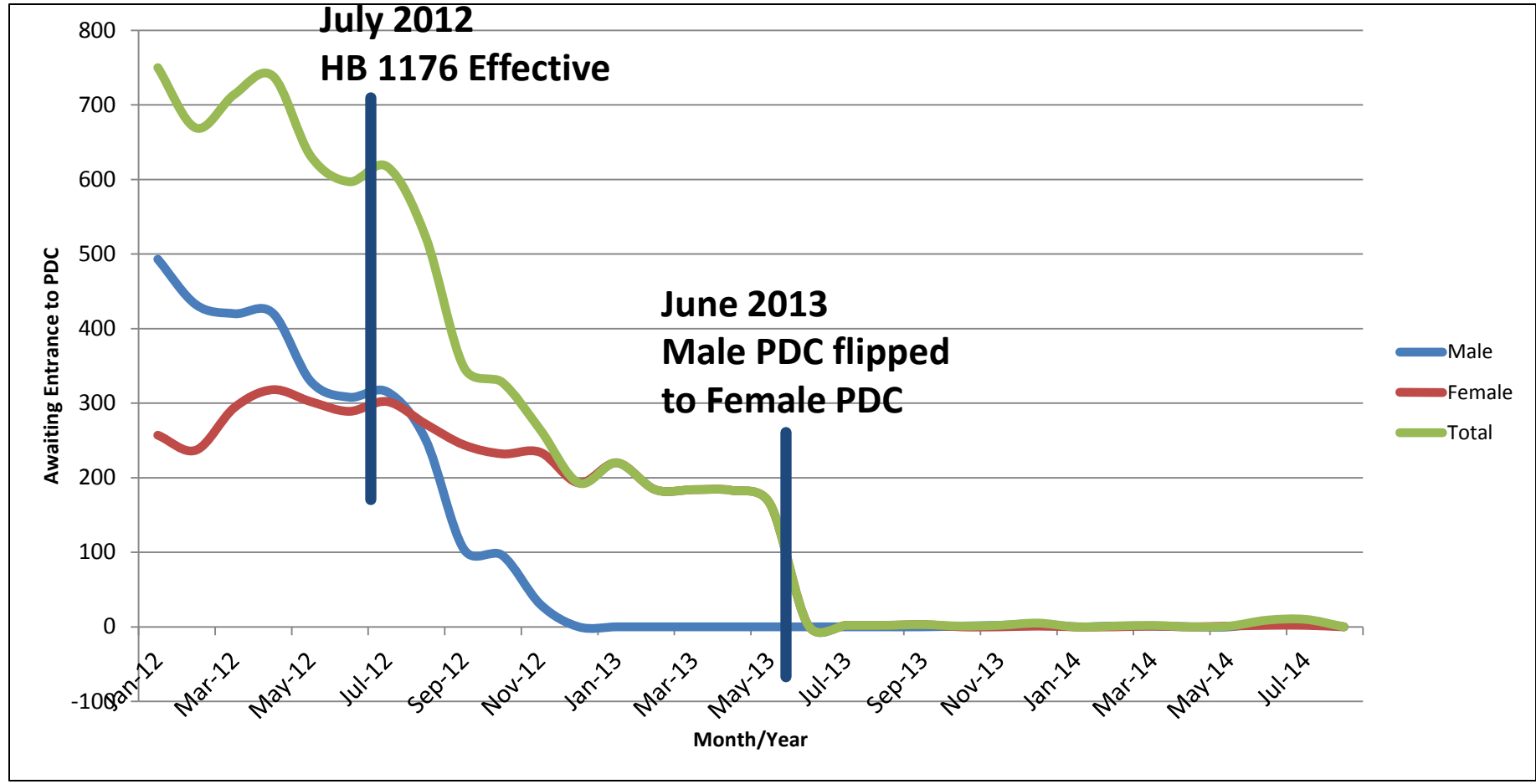
❑ Alternative Expansion

- Day Reporting Center/DRC Lite (32 judicial circuits have DRC or DRC Lite)
- Residential Substance Abuse Treatment beds (1,124 beds brought online since 2001)
- Integrated Treatment Facility Beds (384 Beds brought online in 2012)

Prison Population Since January 2012

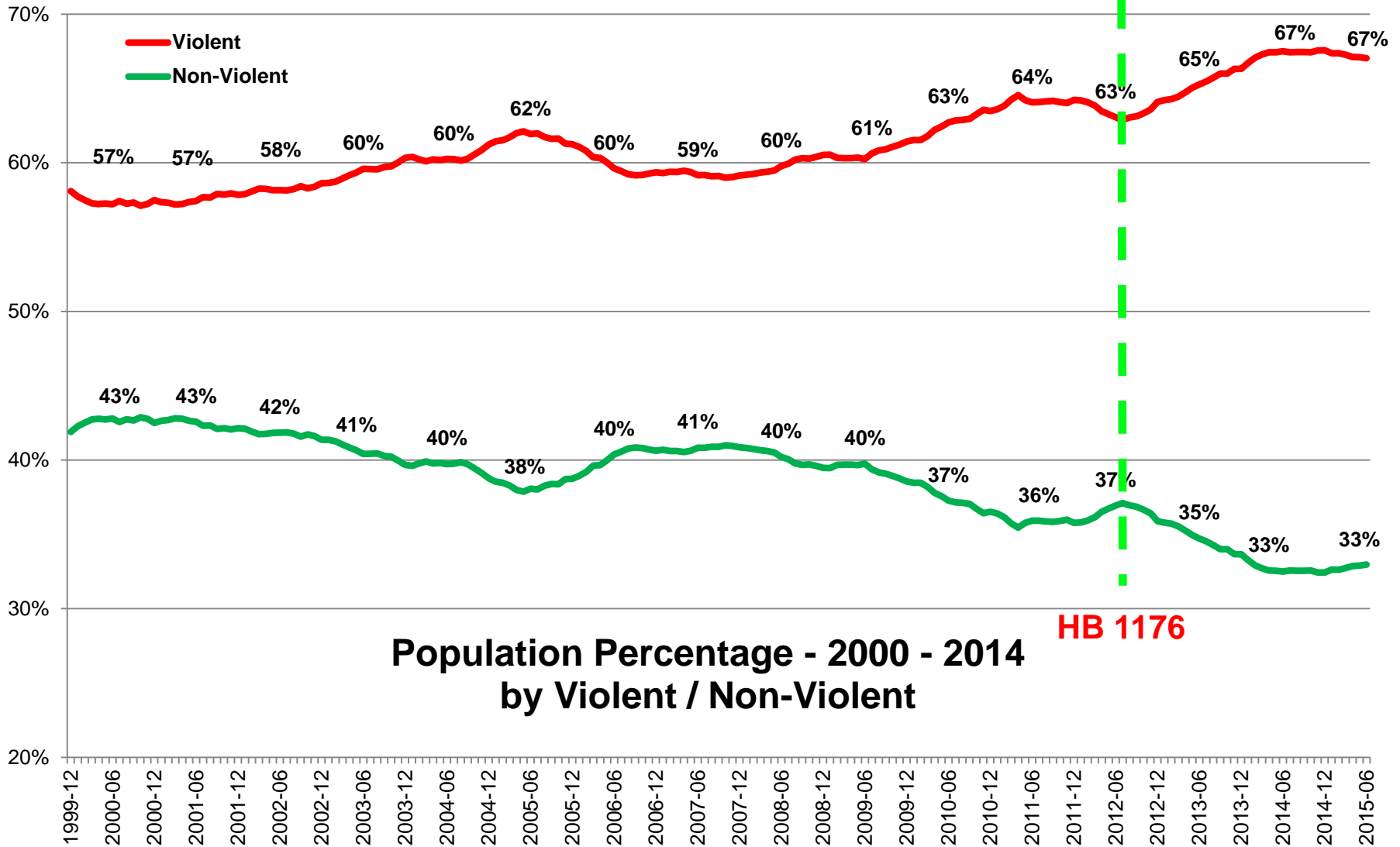


Length of Stay Cap Effect on PDC Backlog



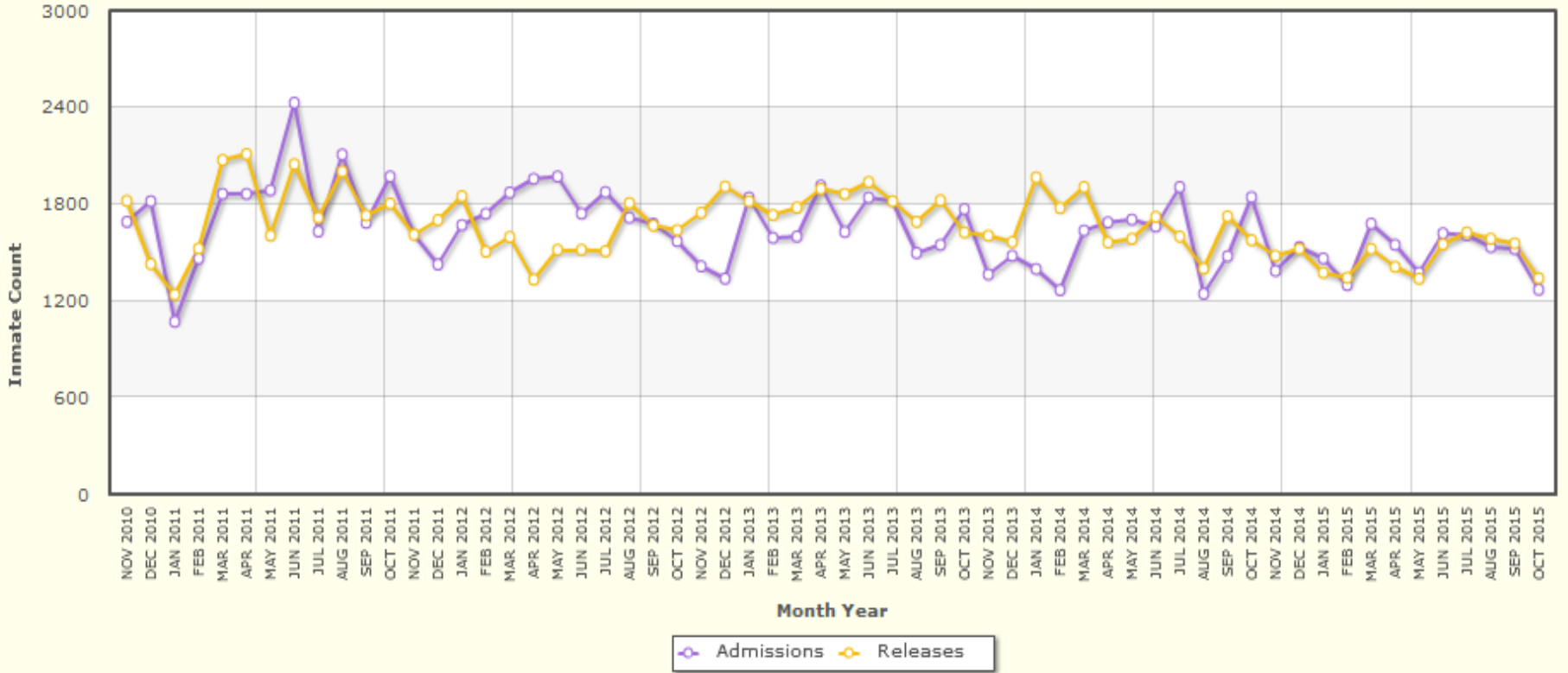
HB 1176 capped PDC Length of Stay at 180 day

Violent vs. Non-Violent Prison Trends



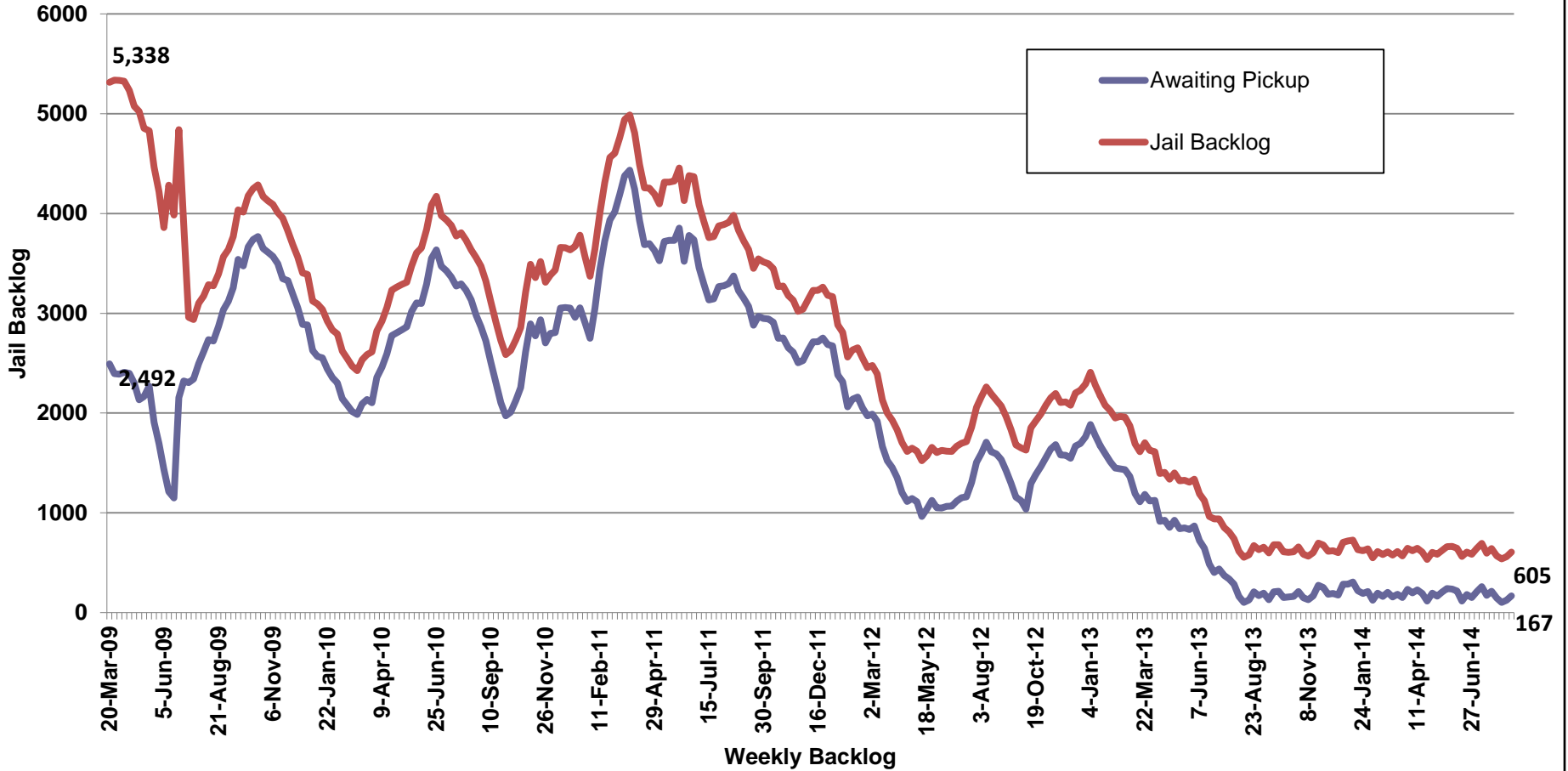
Admissions vs Releases

Last 60 Months



Jail Backlog

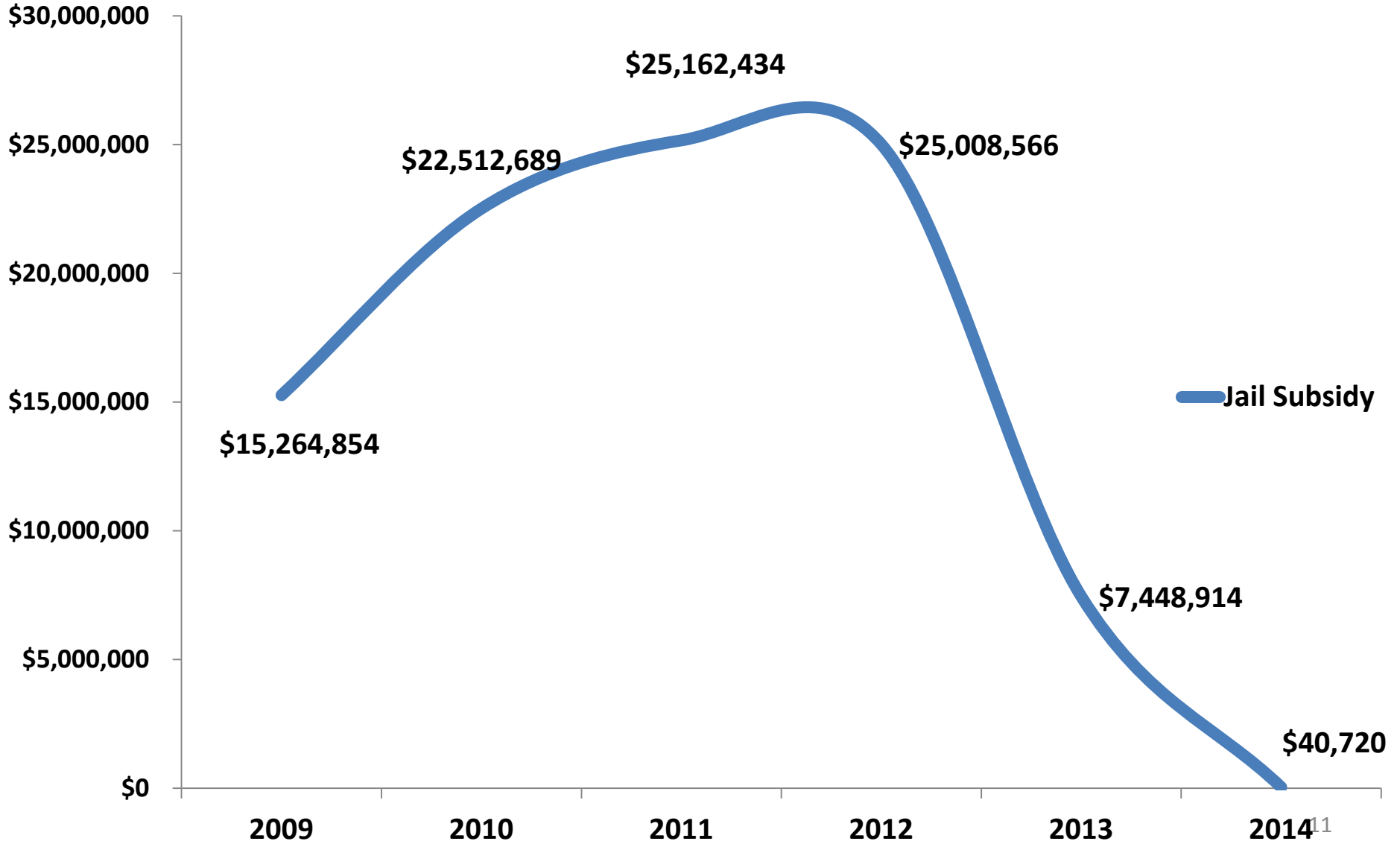
Jail Backlog/Awaiting Pickup



Awaiting Pickup = Sheriff's Count

Jail Backlog = Awaiting Entrance to Prison System

Jail Subsidy



¹¹

Mental Health Data

Mental Health Population by Level

Total MH population 9,150 or 19% of total population.

Total prescribed psychotropic meds 7,284 (72% Of the total MH Population).

Mental Health Level	Total Population
Level II	7,260
Level III	1,532
Level IV	358
Total	9,150

Mental Health Releases by Level (February – August 2015)

MH Level	Feb. 2015	March 2015	April 2015	May 2015	June 2015	July 2015	August 2015	Total
Level II	132	152	136	109	136	154	124	943
Level III	11	20	20	15	15	20	18	119
Level IV	3	5	1	2	4	5	4	24
Total	146	177	157	126	155	179	146	1086

Integrated Treatment Program

Purpose

To provide needed and timely supervision and enhanced services to probationers:

- With co-occurring diagnosis
- That have been unsuccessful in the community (i.e., DRC).

Progressive Offender Management Strategy

1. Community supervision attempt...
 - Evident co-occurrence and non-compliance
2. Integrated Treatment Facility
3. Community Supervision (w/Treatment & Aftercare)
4. Compliance sustainment
5. Successful Sentence Expiration

Integrated Treatment Facility

(2) Integrated Treatment Facilities (ITF)

- Applying Integrated Treatment Facility
 - Male
 - Baxley, Appling County
 - 200
- West Central Integrated Treatment Facility
 - Female
 - Zebulon, Pike County
 - 138

Focus on Dual Diagnosis cases

- Mental Health
- Substance Abuse

Program Length - 9 months

Day Reporting Center (DRC) Lite

**Funding began in FY 13 - \$750K from
Accountability Courts**

What is DRC Lite?

DRC treatment and supervision scaled down and
delivered in rural areas

Currently in 17 circuits

Program Highlights

- Charter Schools at LASP & BCTC
- Welding Programs at Walker, Ware, and adding Lee & Arrendale
- Diesel Mechanic Technician Programs at Telfair, Rogers, & Ware
- Online College for Veterans at Emmanuel with Johnson & Rutledge to follow
- 20 FT Teachers hired for “big mediums” expanding the instructional hours per week
- Approximately 80,000 books collected in reading initiative
- GED Numbers seem to be impressively on the rise
- Chaplains in ALL facilities with upgrades to Full-time status for Max and Large Medium facilities
- Tier programming to include GED instruction and inmates passing